

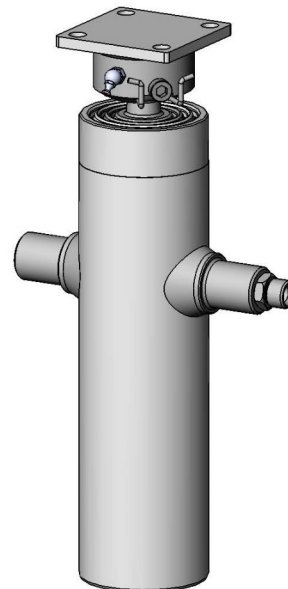
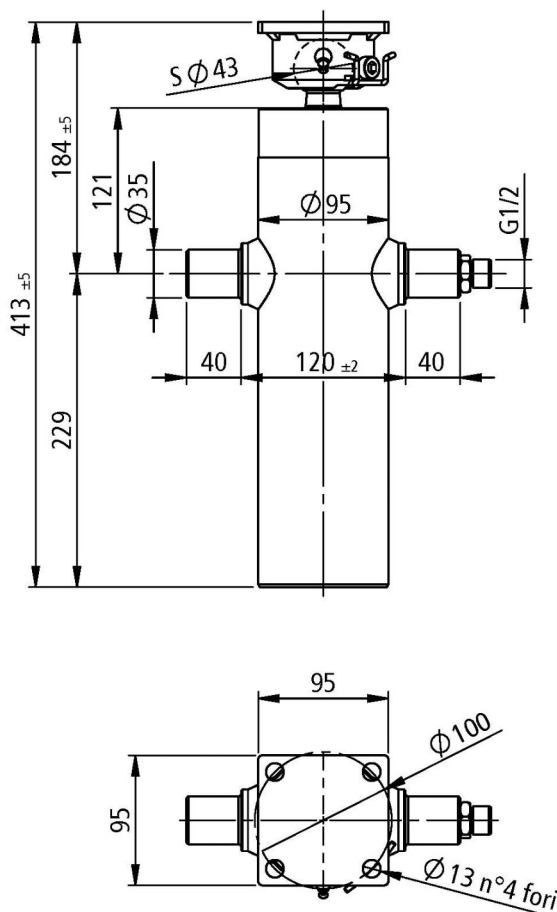
Light duty cylinder, pins-ball

Part Number

3103200753008

Tipping weight

4-9 ton



mounting dimension				184 mm + 20 mm min pull out				total stroke				745 mm	max pressure				220 bar
model: BL320 745 75 3 CRLZB				code: 3103200753008				weight: 18 kg					1222000600				
extension	1	2	3	-	-	-	-	-	-	-	-	-	number of stages: 3				
diameter [mm]	75	60	45	--	--	--	--	--	--	--	--	--					
stroke [mm]	245	247	253	--	--	--	--	--	--	--	--	--	total: 745 mm				
thrust [kN]	97	62	35	--	--	--	--	--	--	--	--	--	max thrust admitted: 41 kN				
oil [dm³]	1.1	0.7	0.4	--	--	--	--	--	--	--	--	--	total: 2.2 dm³				

TECHNICAL NOTES AND SPECIFICATIONS

- The normal application of telescopic cylinder is to lift up tipping bodies, loaded with different materials, and consequently discharge this material whilst the cylinder is extended all along its stroke.
- The body weight plus the max payload are the max tipping weight that can be raised by the cylinder. This value, calculated at the max pressure, is a rough indication of the tipping power of the cylinder and must be used as a first criteria for the selection of the cylinder. The real tipping mass can only be calculated by the design engineer of the dump truck, and must take into account the geometry of the dump body and operating conditions. Never exceed the maximum thrust.
- Never exceed maximum pressure.
- The cylinder has been designed for loads along the longitudinal axis: the cylinder is a lifting device only and may not be used as structural member or be subject to side load.
- Chrome coating type CRL (minimum thickness: 5 µm) on telescopic stages.
- Zinc coating type ZB (minimum thickness: 5 µm) on base tube, ram base and cap.
- H.S.PENTA warranty does not apply to any kind of corrosion of coated or non-coated parts. See terms of warranty.
- Maximum extension speed less than 0.2 m/s.
- Hydraulic oil temperature admitted between -40°C and +100°C.
- In case the cylinders must be stored, do not remove the package. Store them in a dry place, not exposed to rain. Do not store the cylinders for more than 6 (six) months.
- Further specifications see mounting instructions, hydraulic oil specification sheet, user & maintenance manual.

REMARKS

[2008.06.03] [----.--.--]

Chromed stages (Steli cromati)

White zinc plate base tube, ram base and cap (Camicia, fondello e cappello zincati bianchi)

REVISIONS

2009.02.05-Aggiornamento dati

01

2012.05.02-Aggiornamento dati guide FSP e modificato cappello

02